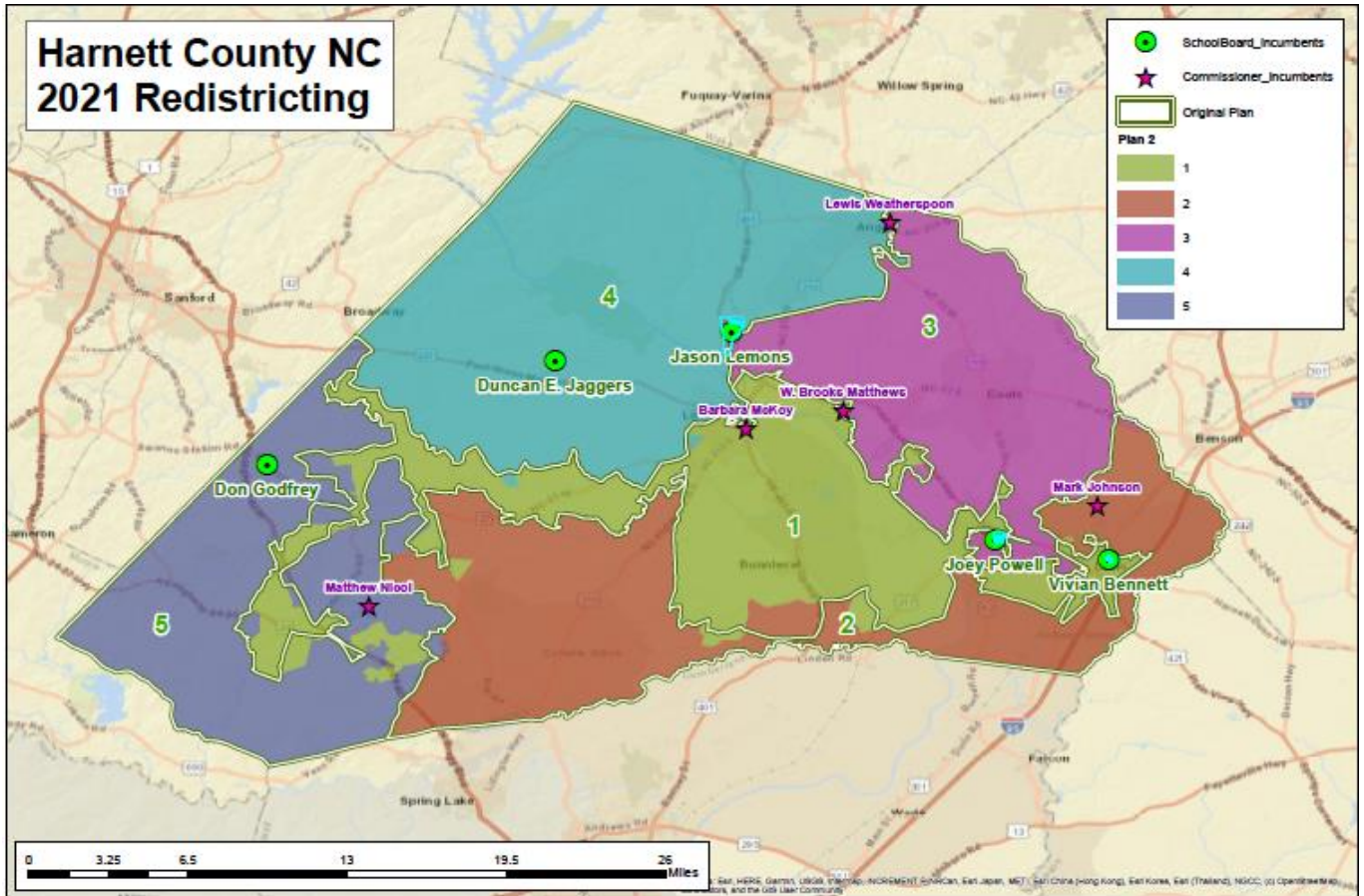


Harnett County - Recommended Plan 2 (showing original boundaries and 10 current incumbents)



Harnett County - Demographic Parameters (Original Plan vs. Recommended Plan 2)

Original District	Total pop.	Prison pop.	Tot. less prison	% All Black (18+ pop.)
1	22,252	940	21,312	43.0%
2	28,294	0	28,294	22.3%
3	25,534	0	25,534	13.2%
4	26,698	26	26,672	13.1%
5	30,790	0	30,790	22.3%
Total	133,568	966	132,602	22.1%
Guardrails: Total Pop. (less prison)				
95%			25,194	
Average			26,520	
105%			27,846	
Plan 2	Total pop.	Prison pop.	Tot. less prison	% All Black (18+ pop.)
1	27,983	940	27,043	41.7%
2	26,589	0	26,589	22.3%
3	26,195	0	26,195	13.3%
4	26,131	26	26,105	13.1%
5	26,670	0	26,670	19.4%
Total	133,568	966	132,602	22.1%