



Harnett  
C O U N T Y  

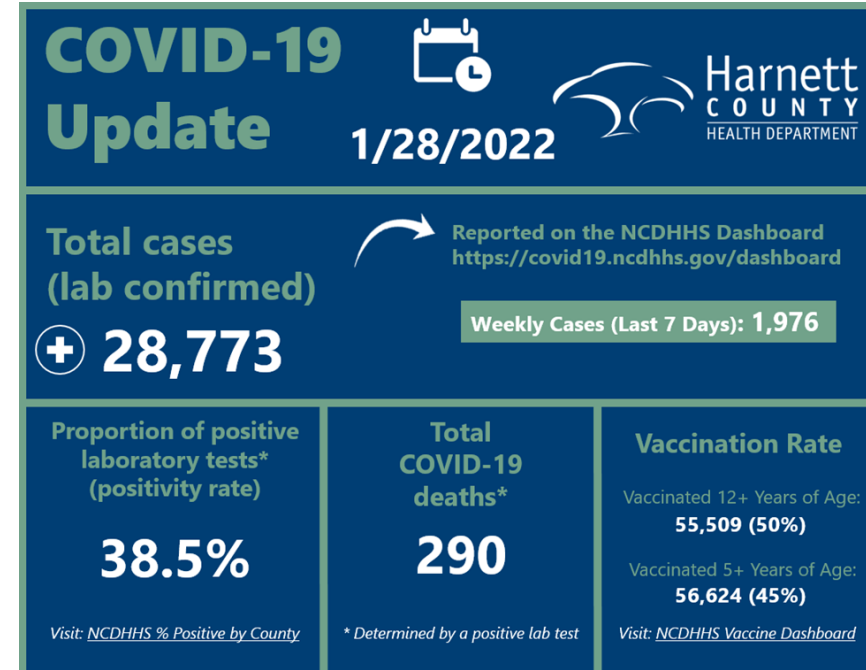
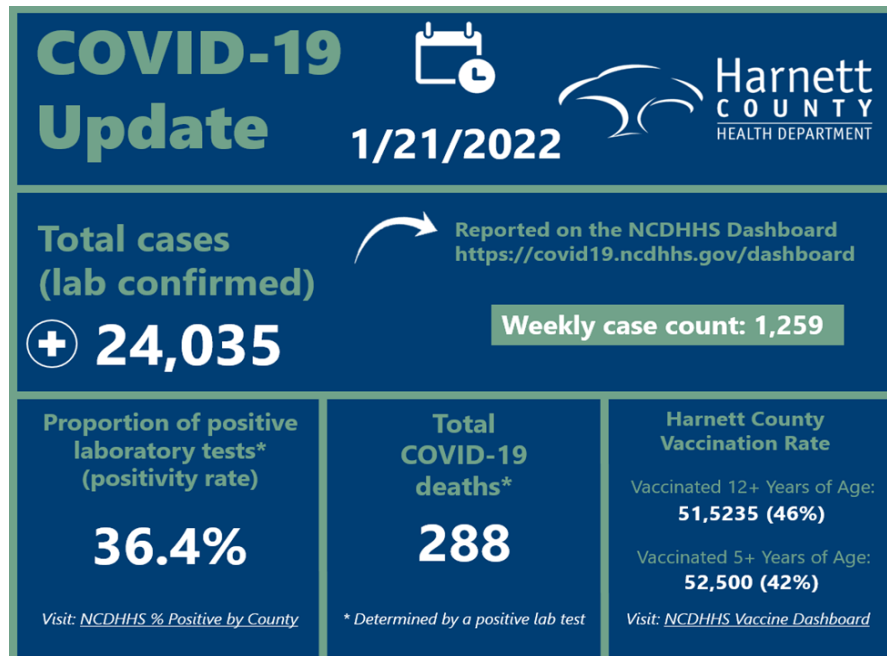
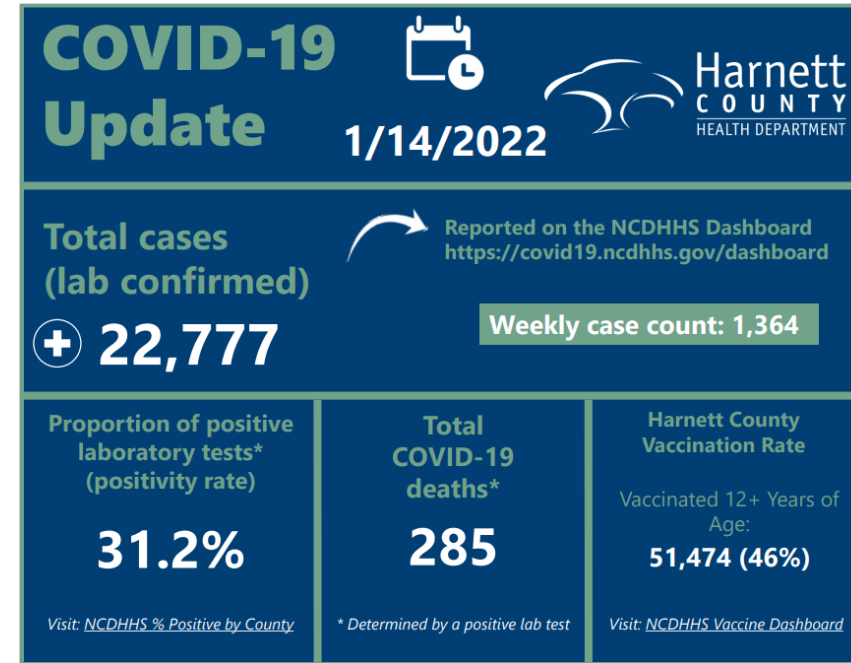
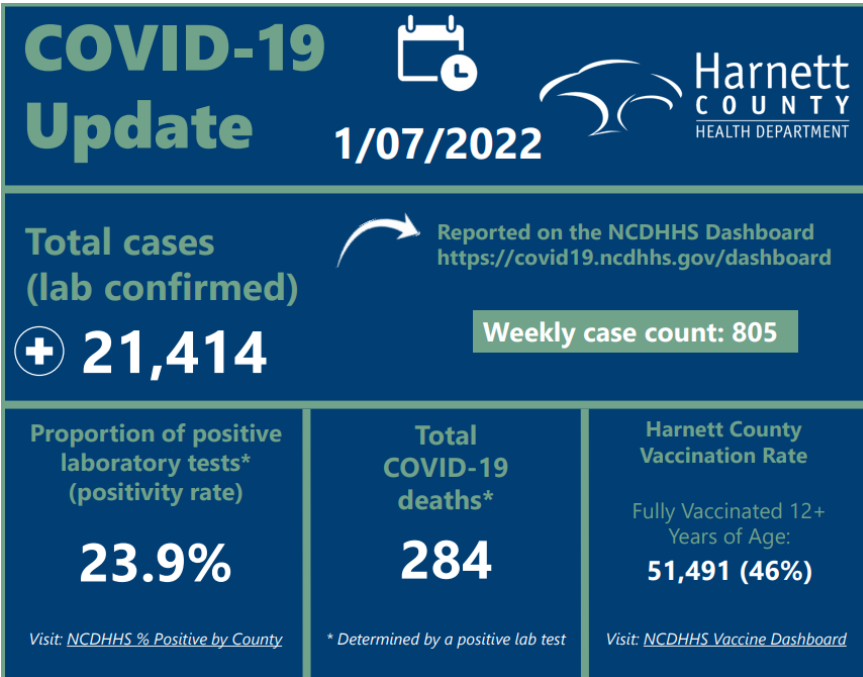
---

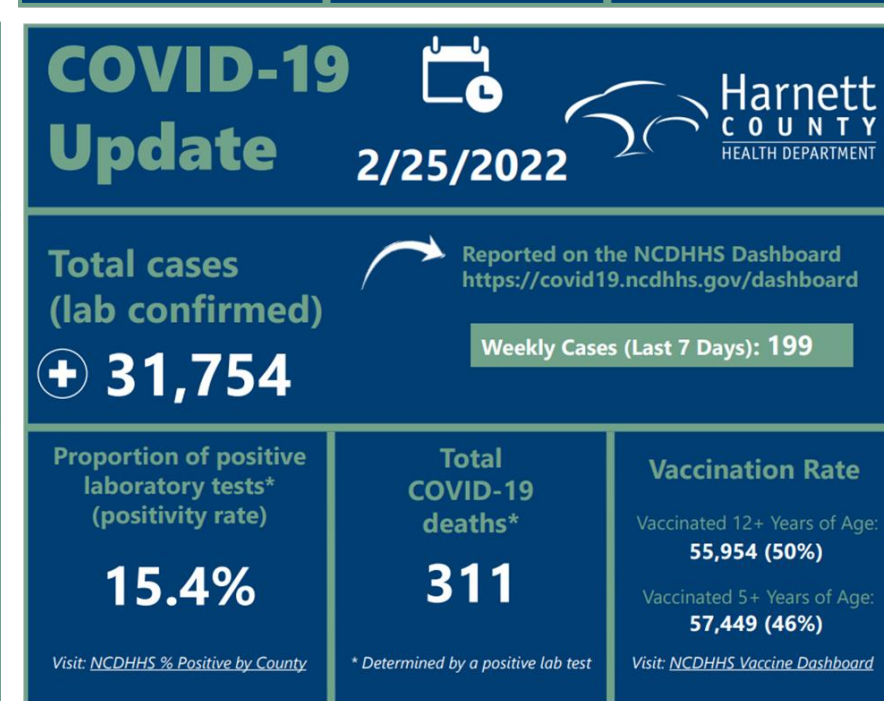
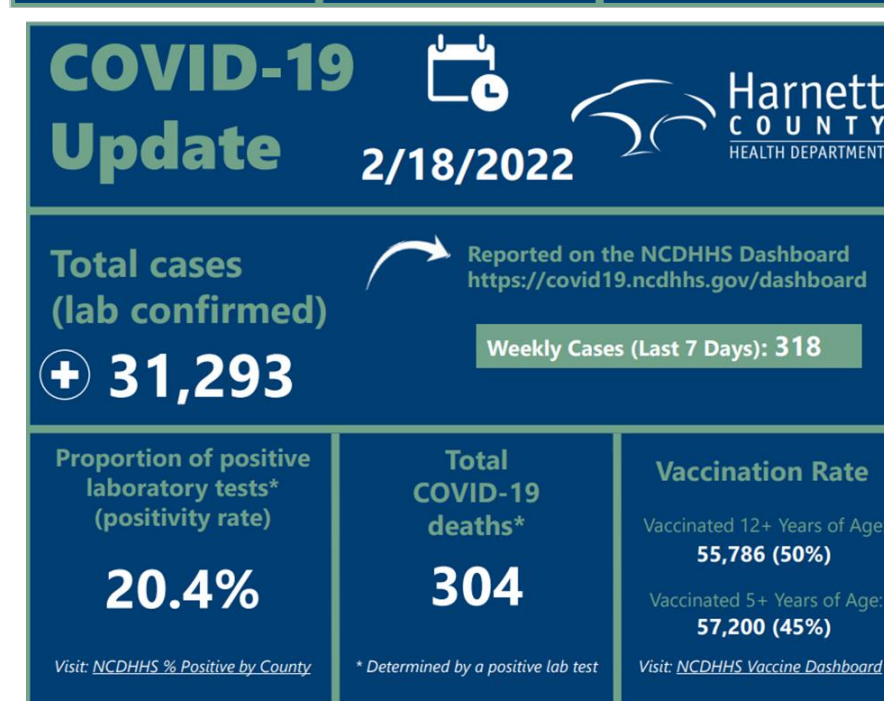
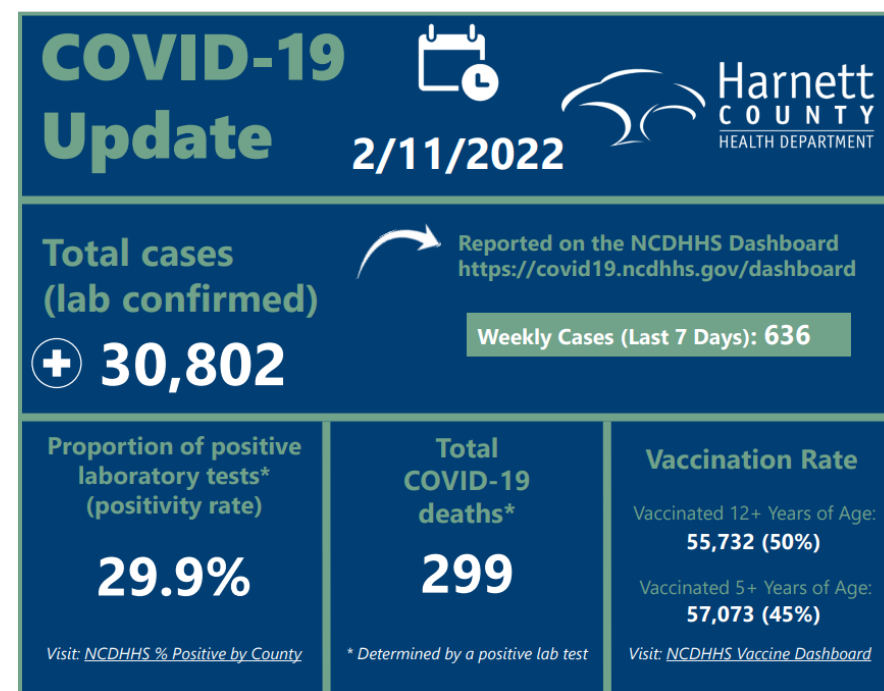
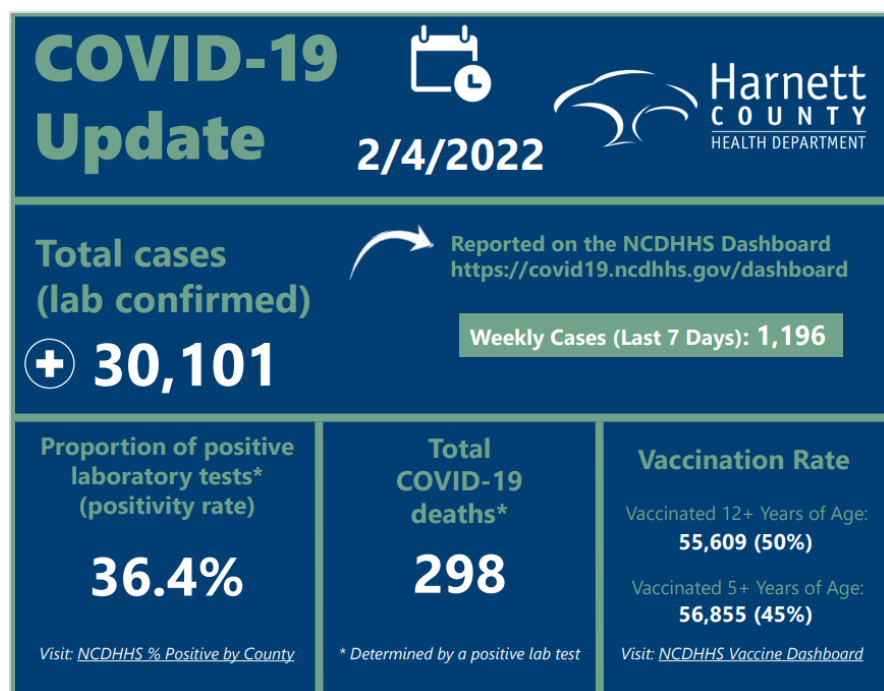
HEALTH DEPARTMENT

2022 COVID-19  
Community Health Data


# COVID-19 Data -2022

- This report provides COVID-19 information and is provided to members of the community through online access @ **[www.harnett.org/health](http://www.harnett.org/health)**






COVID-19 Update



3/4/2022



Total cases (lab confirmed)

+ 32,013

Reported on the NCDHHS Dashboard  
<https://covid19.ncdhhs.gov/dashboard>

Weekly Cases (Last 7 Days): 179

Proportion of positive laboratory tests\* (positivity rate)

10.4%

Visit: [NCDHHS % Positive by County](#)

Total COVID-19 deaths\*

316

\* Determined by a positive lab test


Vaccination Rate

Vaccinated 12+ Years of Age:  
56,247 (50%)


Vaccinated 5+ Years of Age:  
57,844 (46%)

Visit: [NCDHHS Vaccine Dashboard](#)

COVID-19 Update



3/11/2022



Total cases (lab confirmed)

+ 32,643

Reported on the NCDHHS Dashboard  
<https://covid19.ncdhhs.gov/dashboard>

Weekly Cases (Last 7 Days): 314

Proportion of positive laboratory tests\* (positivity rate)

6.7%

Visit: [NCDHHS % Positive by County](#)

Total COVID-19 deaths\*

321

\* Determined by a positive lab test


Vaccination Rate

Vaccinated 12+ Years of Age:  
56,333 (50%)


Vaccinated 5+ Years of Age:  
57,971 (46%)

Visit: [NCDHHS Vaccine Dashboard](#)

COVID-19 Update



3/18/2022



Total cases (lab confirmed)

+ 32,830

Reported on the NCDHHS Dashboard  
<https://covid19.ncdhhs.gov/dashboard>

Weekly Cases (Last 7 Days): 193

Proportion of positive laboratory tests\* (positivity rate)

4.4%

Visit: [NCDHHS % Positive by County](#)

Total COVID-19 deaths\*

327

\* Determined by a positive lab test


Vaccination Rate

Vaccinated 12+ Years of Age:  
56,417 (50%)


Vaccinated 5+ Years of Age:  
58,113 (46%)

Visit: [NCDHHS Vaccine Dashboard](#)

COVID-19 Update



3/25/2022



Total cases (lab confirmed)

+ 32,996

Reported on the NCDHHS Dashboard  
<https://covid19.ncdhhs.gov/dashboard>

Weekly Cases (Last 7 Days): 180

Proportion of positive laboratory tests\* (positivity rate)

3.7%

Visit: [NCDHHS % Positive by County](#)

Total COVID-19 deaths\*

331

\* Determined by a positive lab test


Vaccination Rate

Vaccinated 12+ Years of Age:  
56,478 (50%)


Vaccinated 5+ Years of Age:  
58,217 (46%)

Visit: [NCDHHS Vaccine Dashboard](#)

# COVID-19 Update



4/1/2022



Total cases  
(lab confirmed)

+

33,196

Reported on the NCDHHS Dashboard  
<https://covid19.ncdhhs.gov/dashboard>

Weekly Cases (Last 7 Days): 218

Proportion of positive  
laboratory tests\*  
(positivity rate)

2.8%

Visit: [NCDHHS % Positive by County](#)

Total  
COVID-19  
deaths\*

331

\* Determined by a positive lab test


Vaccination Rate

Vaccinated 12+ Years of Age:  
56,520 (50%)


Vaccinated 5+ Years of Age:  
58,283 (46%)

Visit: [NCDHHS Vaccine Dashboard](#)

# COVID-19 Update



4/8/2022



Total cases  
(lab confirmed)

+

33,410

Reported from the NCDHHS Dashboard  
<https://covid19.ncdhhs.gov/dashboard/cases-and-deaths>

Weekly Case Count: 215

Proportion of positive  
laboratory tests\*  
(positivity rate)

2.6%

Source: [NCDHHS % Positive by County](#)

Total  
COVID-19  
deaths\*

332

\* Determined by a positive lab test


Vaccination Rate

Vaccinated 12+ Years of Age:  
56,504 (50%)


Vaccinated 5+ Years of Age:  
58,277 (46%)

Visit: [NCDHHS Vaccine Dashboard](#)

# COVID-19 Update



4/14/2022



Total cases  
(lab confirmed)

+

33,490

Reported from the NCDHHS Dashboard  
<https://covid19.ncdhhs.gov/dashboard/cases-and-deaths>

Weekly Case Count: 80

Proportion of positive  
laboratory tests\*  
(positivity rate)

3.2%

Source: [NCDHHS % Positive by County](#)

Total  
COVID-19  
deaths\*

333

\* Determined by a positive lab test


Vaccination Rate

Vaccinated 12+ Years of Age:  
56,542 (50%)


Vaccinated 5+ Years of Age:  
58,335 (46%)

Visit: [NCDHHS Vaccine Dashboard](#)

# COVID-19 Update



4/22/2022



Total cases  
(lab confirmed)

+

33,613

Reported from the NCDHHS Dashboard  
<https://covid19.ncdhhs.gov/dashboard/cases-and-deaths>

Weekly Case Count: 113

Proportion of positive  
laboratory tests\*  
(positivity rate)

3.5%

Source: [NCDHHS % Positive by County](#)

Total  
COVID-19  
deaths\*

333

\* Determined by a positive lab test


Vaccination Rate

Vaccinated 12+ Years of Age:  
56,588 (50%)


Vaccinated 5+ Years of Age:  
58,400 (46%)

Visit: [NCDHHS Vaccine Dashboard](#)

# COVID-19 Update



4/29/2022



Total cases  
(lab confirmed)

+

33,914

Reported from the NCDHHS Dashboard  
<https://covid19.ncdhhs.gov/dashboard/cases-and-deaths>

Weekly Case Count: 302

Proportion of positive  
laboratory tests\*  
(positivity rate)

5.2%

Source: [NCDHHS % Positive by County](#)

Total  
COVID-19  
deaths\*

337

\* Determined by a positive lab test

Vaccination Rate


Vaccinated 12+ Years of Age:  
56,654 (51%)

Vaccinated 5+ Years of Age:  
58,483 (46%)


Visit: [NCDHHS Vaccine Dashboard](#)



# COVID-19 Update



5/6/2022



Total cases  
(lab confirmed)

+ 34,071

Reported from the NCDHHS Dashboard  
<https://covid19.ncdhhs.gov/dashboard/cases-and-deaths>

Weekly Case Count: 160

Proportion of positive laboratory tests\*  
(positivity rate)

8.1%

Source: NCDHHS % Positive by County

Total COVID-19 deaths\*

343

\* Determined by a positive lab test


Vaccination Rate

Vaccinated 12+ Years of Age:  
56,664 (51%)


Vaccinated 5+ Years of Age:  
58,499 (46%)

Visit: NCDHHS Vaccine Dashboard

# COVID-19 Update



5/13/2022



Total cases  
(lab confirmed)

+ 34,257

Reported from the NCDHHS Dashboard  
<https://covid19.ncdhhs.gov/dashboard/cases-and-deaths>

Weekly Case Count: 187

Proportion of positive laboratory tests\*  
(positivity rate)

10.8%

Source: NCDHHS % Positive by County

Total COVID-19 deaths\*

346

\* Determined by a positive lab test


Vaccination Rate

Vaccinated 12+ Years of Age:  
56,687 (51%)


Vaccinated 5+ Years of Age:  
58,525 (46%)

Visit: NCDHHS Vaccine Dashboard

# COVID-19 Update



5/20/2022



Total cases  
(lab confirmed)

+ 34,508

Reported from the NCDHHS Dashboard  
<https://covid19.ncdhhs.gov/dashboard/cases-and-deaths>

Weekly Case Count: 255

Proportion of positive laboratory tests\*  
(positivity rate)

12.4%

Source: NCDHHS % Positive by County

Total COVID-19 deaths\*

346

\* Determined by a positive lab test


Vaccination Rate

Vaccinated 12+ Years of Age:  
56,707 (51%)


Vaccinated 5+ Years of Age:  
58,555 (46%)

Visit: NCDHHS Vaccine Dashboard

# COVID-19 Update



5/27/2022



Total cases  
(lab confirmed)

+ 34,840

Reported from the NCDHHS Dashboard  
<https://covid19.ncdhhs.gov/dashboard/cases-and-deaths>

Weekly Case Count: 332

Proportion of positive laboratory tests\*  
(positivity rate)

13.7%

Source: NCDHHS % Positive by County

Total COVID-19 deaths\*

346

\* Determined by a positive lab test

Vaccination Rate

Vaccinated 12+ Years of Age:  
56,707 (51%)

Vaccinated 5+ Years of Age:  
58,565 (46%)

Visit: NCDHHS Vaccine Dashboard

## COVID-19 Update

6/3/2022



Total cases  
(lab confirmed)

+ 35,109

Reported from the NCDHHS Dashboard  
<https://covid19.ncdhhs.gov/dashboard/cases-and-deaths>

Weekly Case Count: 270

Proportion of positive  
laboratory tests\*  
(positivity rate)

15.8%

Source: NCDHHS % Positive by County

Total  
COVID-19  
deaths\*

347

\* Determined by a positive lab test

Vaccination Rate

Vaccinated 12+ Years of Age:  
56,699 (51%)

Vaccinated 5+ Years of Age:  
58,566 (46%)

Visit: NCDHHS Vaccine Dashboard

## COVID-19 Update

6/10/2022



Total cases  
(lab confirmed)

+ 35,345

Reported from the NCDHHS Dashboard  
<https://covid19.ncdhhs.gov/dashboard/cases-and-deaths>

Weekly Case Count: 238

Proportion of positive  
laboratory tests\*  
(positivity rate)

17.4%

Source: NCDHHS % Positive by County

Total  
COVID-19  
deaths\*

347

\* Determined by a positive lab test

Vaccination Rate

Vaccinated 12+ Years of Age:  
56,692 (51%)

Vaccinated 5+ Years of Age:  
58,568 (46%)

Visit: NCDHHS Vaccine Dashboard

## COVID-19 Update

6/17/2022



Total cases  
(lab confirmed)

+ 35,625

Reported from the NCDHHS Dashboard  
<https://covid19.ncdhhs.gov/dashboard/cases-and-deaths>

Weekly Case Count: 281

Proportion of positive  
laboratory tests\*  
(positivity rate)

16.9%

Source: NCDHHS % Positive by County

Total  
COVID-19  
deaths\*

347

\* Determined by a positive lab test

Vaccination Rate

Vaccinated 12+ Years of Age:  
56,706 (51%)

Vaccinated 5+ Years of Age:  
58,586 (46%)

Visit: NCDHHS Vaccine Dashboard

## COVID-19 Update

6/24/2022



Total cases  
(lab confirmed)

+ 35,869

Reported from the NCDHHS Dashboard  
<https://covid19.ncdhhs.gov/dashboard/cases-and-deaths>

Weekly Case Count: 250

Proportion of positive  
laboratory tests\*  
(positivity rate)

16.4%

Source: NCDHHS % Positive by County

Total  
COVID-19  
deaths\*

347

\* Determined by a positive lab test

Vaccination Rate


Vaccinated 12+ Years of Age:  
56,726 (51%)

Vaccinated 5+ Years of Age:  
58,609 (46%)


Visit: NCDHHS Vaccine Dashboard



# COVID-19 Update



7/1/2022



Total cases (lab confirmed)

+ 36,148

Reported from the NCDHHS Dashboard

<https://covid19.ncdhhs.gov/dashboard/cases-and-deaths>

Weekly Case Count: 280

Proportion of positive laboratory tests\* (positivity rate)

16.3%

Source: NCDHHS % Positive by County

Total COVID-19 deaths\*

349

\* Determined by a positive lab test

Vaccination Rate

Vaccinated 12+ Years of Age:


56,748 (51%)

Vaccinated 5+ Years of Age:


58,629 (46%)

Visit: NCDHHS Vaccine Dashboard

# COVID-19 Update



7/8/2022



Total cases (lab confirmed)

+ 36,405

Reported from the NCDHHS Dashboard

<https://covid19.ncdhhs.gov/dashboard/cases-and-deaths>

Weekly Case Count: 258

Proportion of positive laboratory tests\* (positivity rate)

19.0%

Source: NCDHHS % Positive by County

Total COVID-19 deaths\*

349

\* Determined by a positive lab test

Vaccination Rate

Vaccinated 12+ Years of Age:


56,600 (51%)

Vaccinated 5+ Years of Age:


58,501 (46%)

Visit: NCDHHS Vaccine Dashboard

# COVID-19 Update



7/15/2022



Total cases (lab confirmed)

+ 36,757

Reported from the NCDHHS Dashboard

<https://covid19.ncdhhs.gov/dashboard/cases-and-deaths>

Weekly Case Count: 352

Proportion of positive laboratory tests\* (positivity rate)

22.2%

Source: NCDHHS % Positive by County

Total COVID-19 deaths\*

350

\* Determined by a positive lab test

Vaccination Rate

Vaccinated 12+ Years of Age:


56,624 (51%)

Vaccinated 5+ Years of Age:


58,532 (46%)

Visit: NCDHHS Vaccine Dashboard

# COVID-19 Update



7/22/2022



Total cases (lab confirmed)

+ 37,197

Reported from the NCDHHS Dashboard

<https://covid19.ncdhhs.gov/dashboard/cases-and-deaths>

Weekly Case Count: 441

Proportion of positive laboratory tests\* (positivity rate)

23.4%

Source: NCDHHS % Positive by County

Total COVID-19 deaths\*

350

\* Determined by a positive lab test

Vaccination Rate

Vaccinated 12+ Years of Age:


56,648 (51%)

Vaccinated 5+ Years of Age:


58,555 (46%)

Visit: NCDHHS Vaccine Dashboard

# COVID-19 Update



7/29/2022



Total cases (lab confirmed)

+ 37,579

Reported from the NCDHHS Dashboard

<https://covid19.ncdhhs.gov/dashboard/cases-and-deaths>

Weekly Case Count: 383

Proportion of positive laboratory tests\* (positivity rate)

25.9%

Source: NCDHHS % Positive by County

Total COVID-19 deaths\*

351

\* Determined by a positive lab test

Vaccination Rate

Vaccinated 12+ Years of Age:

56,670 (51%)

Vaccinated 5+ Years of Age:

58,576 (46%)

Visit: NCDHHS Vaccine Dashboard

## COVID-19 Update

8/5/2022



Harnett  
COUNTY  
HEALTH DEPARTMENT

Total cases  
(lab confirmed)

+ 37,982

Reported from the NCDHHS Dashboard  
<https://covid19.ncdhhs.gov/dashboard/cases-and-deaths>

Weekly Case Count: 404

Proportion of positive  
laboratory tests\*  
(positivity rate)

25.1%

Source: NCDHHS % Positive by County

Total  
COVID-19  
deaths\*

351

\* Determined by a positive lab test

Vaccination Rate

Vaccinated 12+ Years of Age:  
56,700 (51%)

Vaccinated 5+ Years of Age:  
58,610 (46%)

Visit: [NCDHHS Vaccine Dashboard](#)

## COVID-19 Update

8/12/2022



Harnett  
COUNTY  
HEALTH DEPARTMENT

Total cases  
(lab confirmed)

+ 38,307

Reported from the NCDHHS Dashboard  
<https://covid19.ncdhhs.gov/dashboard/cases-and-deaths>

Weekly Case Count: 326

Proportion of positive  
laboratory tests\*  
(positivity rate)

24.9%

Source: NCDHHS % Positive by County

Total  
COVID-19  
deaths\*

352

\* Determined by a positive lab test

Vaccination Rate

Vaccinated 12+ Years of Age:  
56,742 (51%)

Vaccinated 5+ Years of Age:  
58,657 (47%)

Visit: [NCDHHS Vaccine Dashboard](#)

## COVID-19 Update

8/19/2022



Harnett  
COUNTY  
HEALTH DEPARTMENT

Total cases  
(lab confirmed)

+ 38,596

Reported from the NCDHHS Dashboard  
<https://covid19.ncdhhs.gov/dashboard/cases-and-deaths>

Weekly Case Count: 288

Proportion of positive  
laboratory tests\*  
(positivity rate)

25.7%

Source: NCDHHS % Positive by County

Total  
COVID-19  
deaths\*

354

\* Determined by a positive lab test

Vaccination Rate

Vaccinated 12+ Years of Age:  
56,823 (51%)

Vaccinated 5+ Years of Age:  
58,746 (47%)

Visit: [NCDHHS Vaccine Dashboard](#)

## COVID-19 Update

8/26/2022



Harnett  
COUNTY  
HEALTH DEPARTMENT

Total cases  
(lab confirmed)

+ 38,855

Reported from the NCDHHS Dashboard  
<https://covid19.ncdhhs.gov/dashboard/cases-and-deaths>

Weekly Case Count: 266

Proportion of positive  
laboratory tests\*  
(positivity rate)

23.6%

Source: NCDHHS % Positive by County

Total  
COVID-19  
deaths\*

356

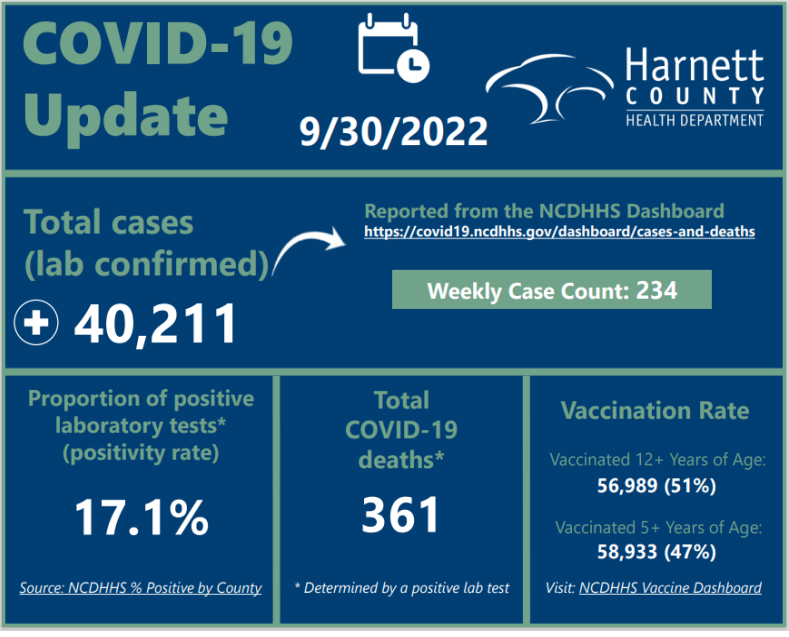
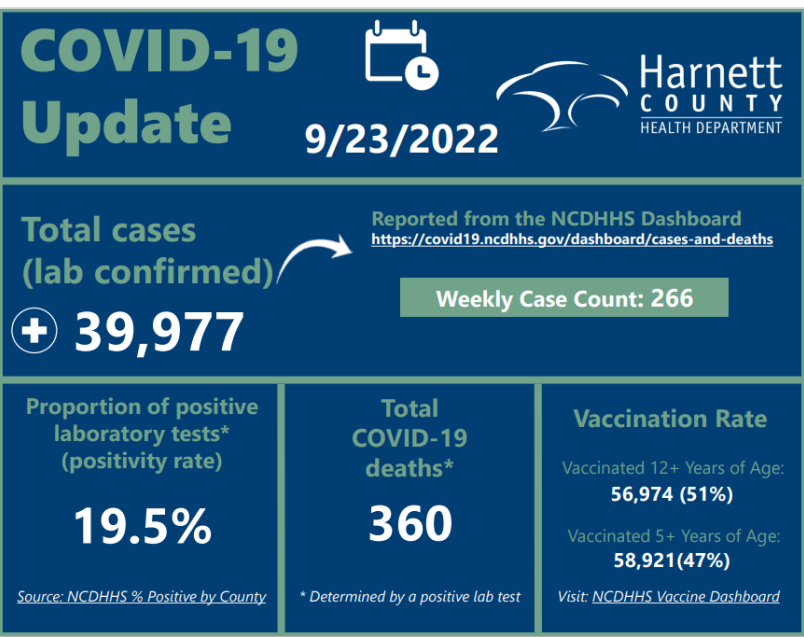
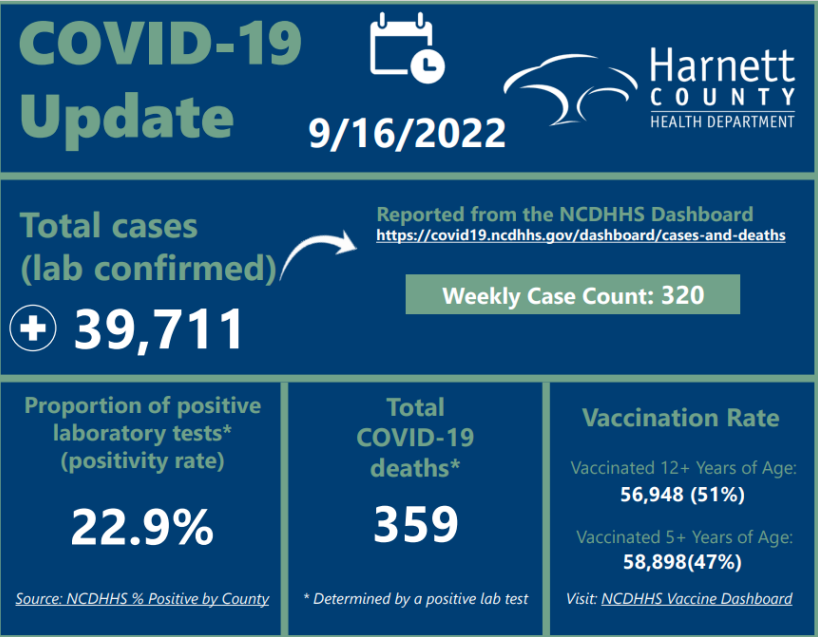
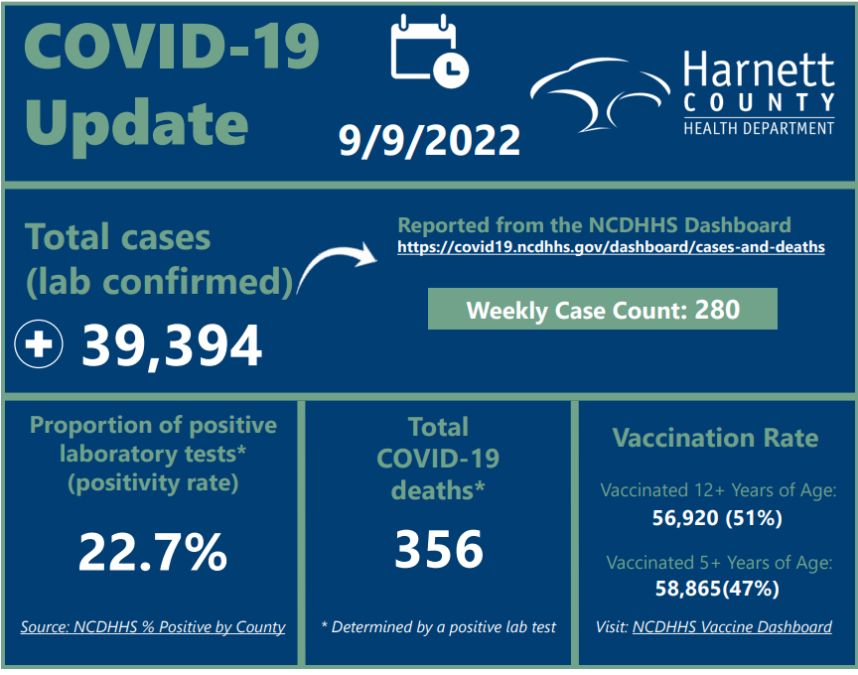
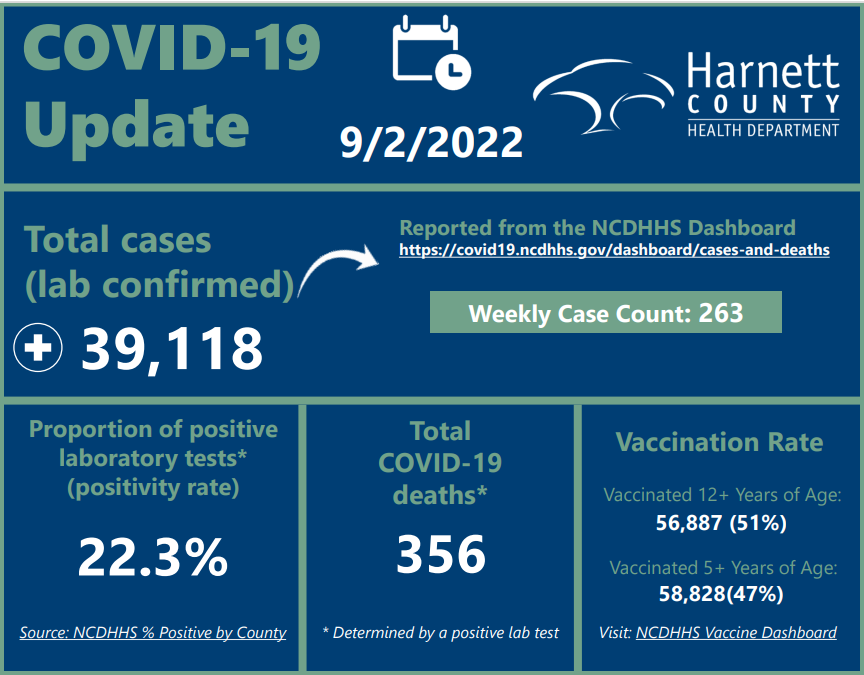
\* Determined by a positive lab test

Vaccination Rate


Vaccinated 12+ Years of Age:  
56,854 (51%)

Vaccinated 5+ Years of Age:  
58,789 (47%)


Visit: [NCDHHS Vaccine Dashboard](#)



# COVID-19 Update



10/7/2022



Total cases  
(lab confirmed)


+ 40,333

Reported from the NCDHHS Dashboard  
<https://covid19.ncdhhs.gov/dashboard/cases-and-deaths>


Weekly Case Count: 129

Proportion of positive laboratory tests* (positivity rate)	Total COVID-19 deaths*	Vaccination Rate
14.8%	362	Vaccinated 12+ Years of Age: 57,012 (51%) Vaccinated 5+ Years of Age: 58,951 (47%)
<small>Source: NCDHHS % Positive by County</small>	<small>* Determined by a positive lab test</small>	<small>Visit: <a href="#">NCDHHS Vaccine Dashboard</a></small>

# COVID-19 Update



10/14/2022



Total cases  
(lab confirmed)


+ 40,368

Reported from the NCDHHS Dashboard  
<https://covid19.ncdhhs.gov/dashboard/cases-and-deaths>


Weekly Case Count: 110

Proportion of positive laboratory tests* (positivity rate)	Total COVID-19 deaths*	Vaccination Rate
11.5%	362	Vaccinated 12+ Years of Age: 56,989 (51%) Vaccinated 5+ Years of Age: 58,923 (47%)
<small>Source: NCDHHS % Positive by County</small>	<small>* Determined by a positive lab test</small>	<small>Visit: <a href="#">NCDHHS Vaccine Dashboard</a></small>

# COVID-19 Update



10/21/2022



Total cases  
(lab confirmed)


+ 40,447

Reported from the NCDHHS Dashboard  
<https://covid19.ncdhhs.gov/dashboard/cases-and-deaths>


Weekly Case Count: 83

Proportion of positive laboratory tests* (positivity rate)	Total COVID-19 deaths*	Vaccination Rate
11.5%	362	Vaccinated 12+ Years of Age: 56,989 (51%) Vaccinated 5+ Years of Age: 58,923 (47%)
<small>Source: NCDHHS % Positive by County</small>	<small>* Determined by a positive lab test</small>	<small>Visit: <a href="#">NCDHHS Vaccine Dashboard</a></small>

# COVID-19 Update



10/28/2022



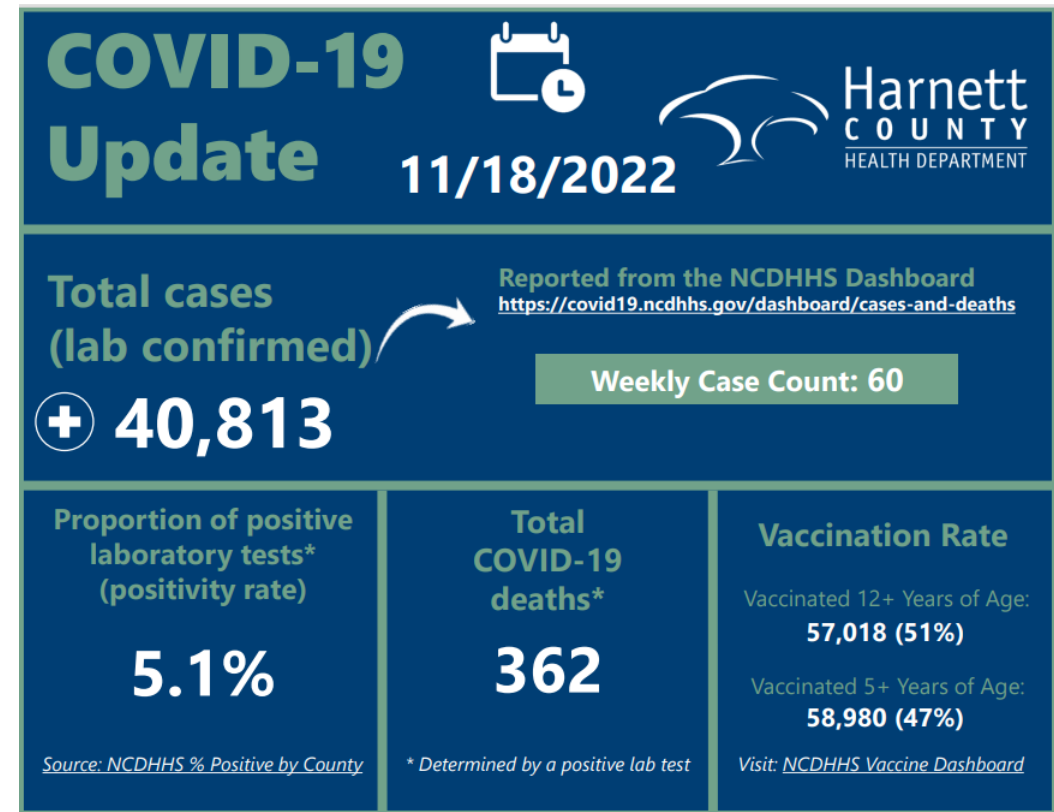
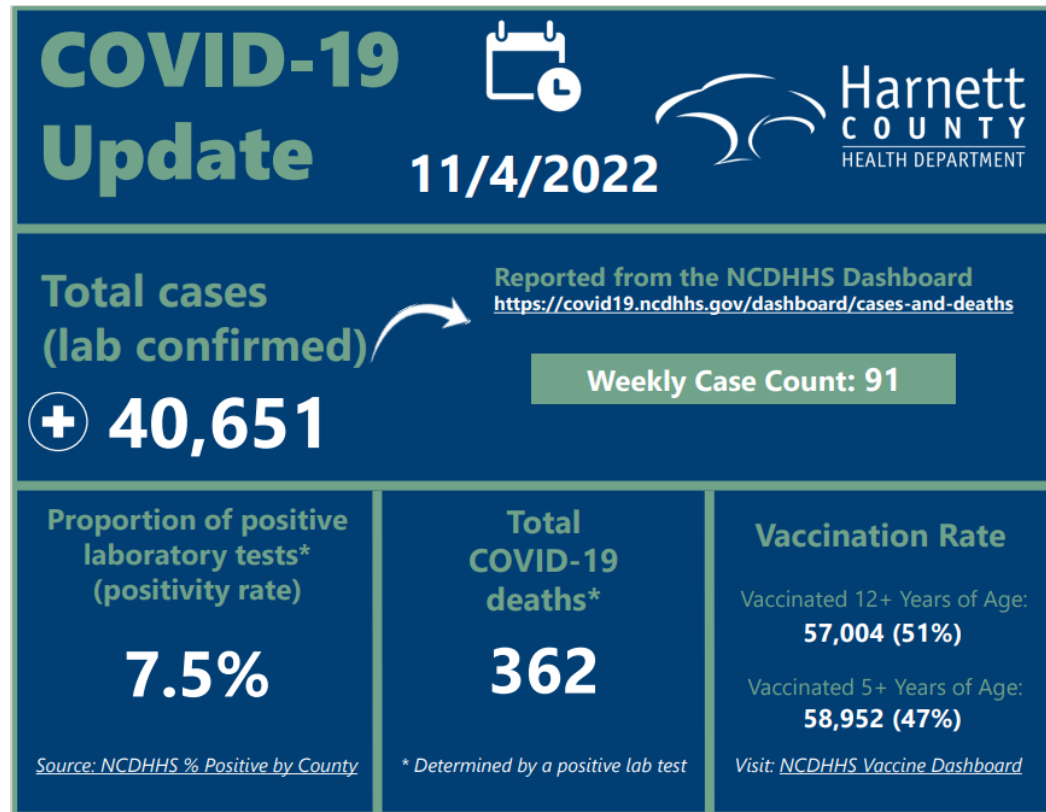
Total cases  
(lab confirmed)

+ 40,562

Reported from the NCDHHS Dashboard  
<https://covid19.ncdhhs.gov/dashboard/cases-and-deaths>


Weekly Case Count: 116

Proportion of positive laboratory tests* (positivity rate)	Total COVID-19 deaths*	Vaccination Rate
7.2%	362	Vaccinated 12+ Years of Age: 57,024 (51%) Vaccinated 5+ Years of Age: 58,967 (47%)
<small>Source: NCDHHS % Positive by County</small>	<small>* Determined by a positive lab test</small>	<small>Visit: <a href="#">NCDHHS Vaccine Dashboard</a></small>






COVID-19 Update



12/02/2022



Harnett  
COUNTY  
HEALTH DEPARTMENT

Total cases  
(lab confirmed)


Reported from the NCDHHS Dashboard  
<https://covid19.ncdhhs.gov/dashboard/cases-and-deaths>

+ 41,007


Weekly Case Count: 116

Proportion of positive laboratory tests* (positivity rate)	Total COVID-19 deaths*	Vaccination Rate (All Ages)
5.5%	364	44% (59,177)
<small>Source: NCDHHS % Positive by County</small>	<small>* Determined by a positive lab test</small>	<small>Visit: NCDHHS Vaccine Dashboard</small>

COVID-19 Update



12/09/2022



Harnett  
COUNTY  
HEALTH DEPARTMENT

Total cases  
(lab confirmed)


Reported from the NCDHHS Dashboard  
<https://covid19.ncdhhs.gov/dashboard/cases-and-deaths>

+ 41,164


Weekly Case Count: 159

Proportion of positive laboratory tests* (positivity rate)	Total COVID-19 deaths*	Vaccination Rate (All Ages)
8.6%	364	44% (59,224)
<small>Source: NCDHHS % Positive by County</small>	<small>* Determined by a positive lab test</small>	<small>Visit: NCDHHS Vaccine Dashboard</small>

COVID-19 Update



12/16/2022



Harnett  
COUNTY  
HEALTH DEPARTMENT

Total cases  
(lab confirmed)


Reported from the NCDHHS Dashboard  
<https://covid19.ncdhhs.gov/dashboard/cases-and-deaths>

+ 41,463


Weekly Case Count: 299

Proportion of positive laboratory tests* (positivity rate)	Total COVID-19 deaths*	Vaccination Rate (All Ages)
10.9%	365	44% (59,244)
<small>Source: NCDHHS % Positive by County</small>	<small>* Determined by a positive lab test</small>	<small>Visit: NCDHHS Vaccine Dashboard</small>

COVID-19 Update



12/22/2022



Harnett  
COUNTY  
HEALTH DEPARTMENT

Total cases  
(lab confirmed)

Reported from the NCDHHS Dashboard  
<https://covid19.ncdhhs.gov/dashboard/cases-and-deaths>

+ 41,669

Weekly Case Count: 208

Proportion of positive laboratory tests* (positivity rate)	Total COVID-19 deaths*	Vaccination Rate (All Ages)
12.4%	366	44% (59,259)
<small>Source: NCDHHS % Positive by County</small>	<small>* Determined by a positive lab test</small>	<small>Visit: NCDHHS Vaccine Dashboard</small>



**For more information regarding community health data please  
call our office at 910-893-7550**

