



LILLINGTON TO CAMPBELL UNIVERSITY

Existing Facilities and Potential Alternatives

- Shared Use Path Alternative
- Shared Roadway Alternative
- Existing Shared Use Path
- Existing Sidewalk

Preferred Alignment Segments

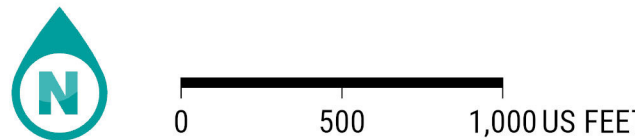
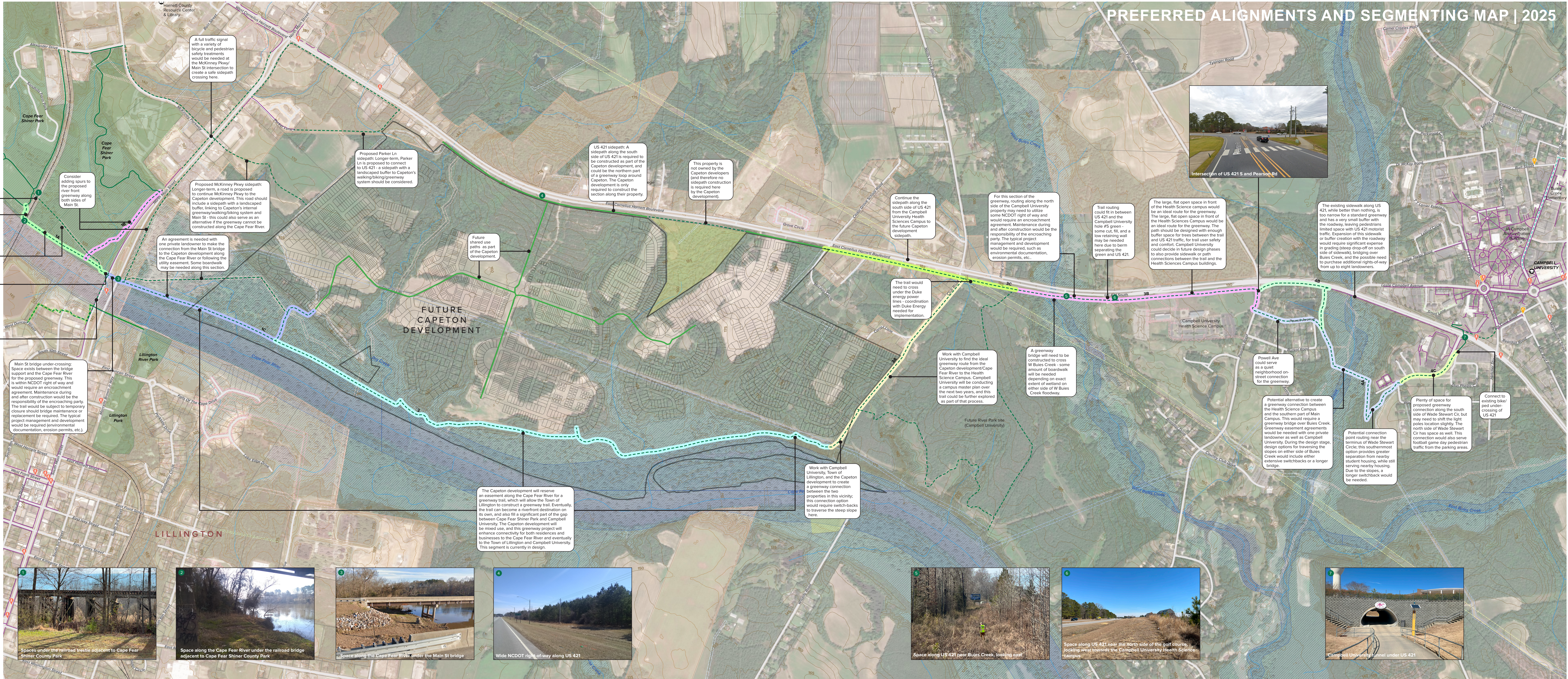
- 1A
- 1B
- 1C
- 2
- 3A
- 3B
- 3C
- 4A
- 4B
- 4C

Easements

- Conservation Easements
- Drainage
- Electric
- Gas
- Greenway
- Greenway Bike
- Ingress_Egress
- Utility
- WasteWater
- Water

Other Features

- Municipal Boundaries
- Parcels
- Parks
- Libraries
- Schools
- Contours - 5ft
- Streams
- Floodway
- 100 year floodplain
- Wetlands
- Bike Crash
- Pedestrian Crash
- Colleges_and_Universities





CAMPBELL UNIVERSITY TO COATS

Existing Facilities and Potential Alternatives

- Shared Use Path Alternative
- Shared Roadway Alternative
- Existing Shared Use Path
- Existing Sidewalk

Preferred Alignment Segments

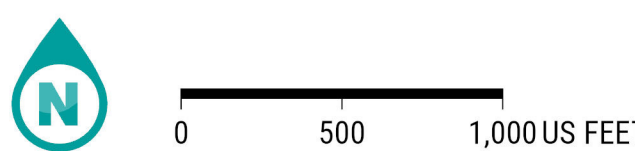
- 4A
- 4B
- 4C
- 5

Easements

- Drainage
- Electric
- Gas
- Ingress_Egress
- Utility
- WasteWater
- Water

Other Features

- Municipal Boundaries
- Parcels
- Parks
- Libraries
- Schools
- Contours - 5ft
- Streams
- Floodway
- 100 year floodplain
- Wetlands
- Bike Crash
- Pedestrian Crash
- Colleges_and_Universities





COATS TO DUNN-ERWIN RAIL TRAIL

- Existing Facilities and Potential Alternatives
- Shared Use Path Alternative
 - Shared Roadway Alternative
 - Existing Shared Use Path
 - Existing Sidewalk
- Preferred Alignment Segments
- 5
- Easements
- Drainage
 - Electric
 - Ingress_Egress
 - Railroad
 - Utility
 - WasteWater
 - Water
- Other Features
- Municipal Boundaries
 - Parcels
 - Parks
 - Libraries
 - Schools
 - Contours - 5ft
 - Streams
 - Floodway
 - 100 year floodplain
 - Wetlands
 - Bike Crash
 - Pedestrian Crash
 - Colleges_and_Universities



PREFERRED ALIGNMENTS AND SEGMENTING MAP | 2025

